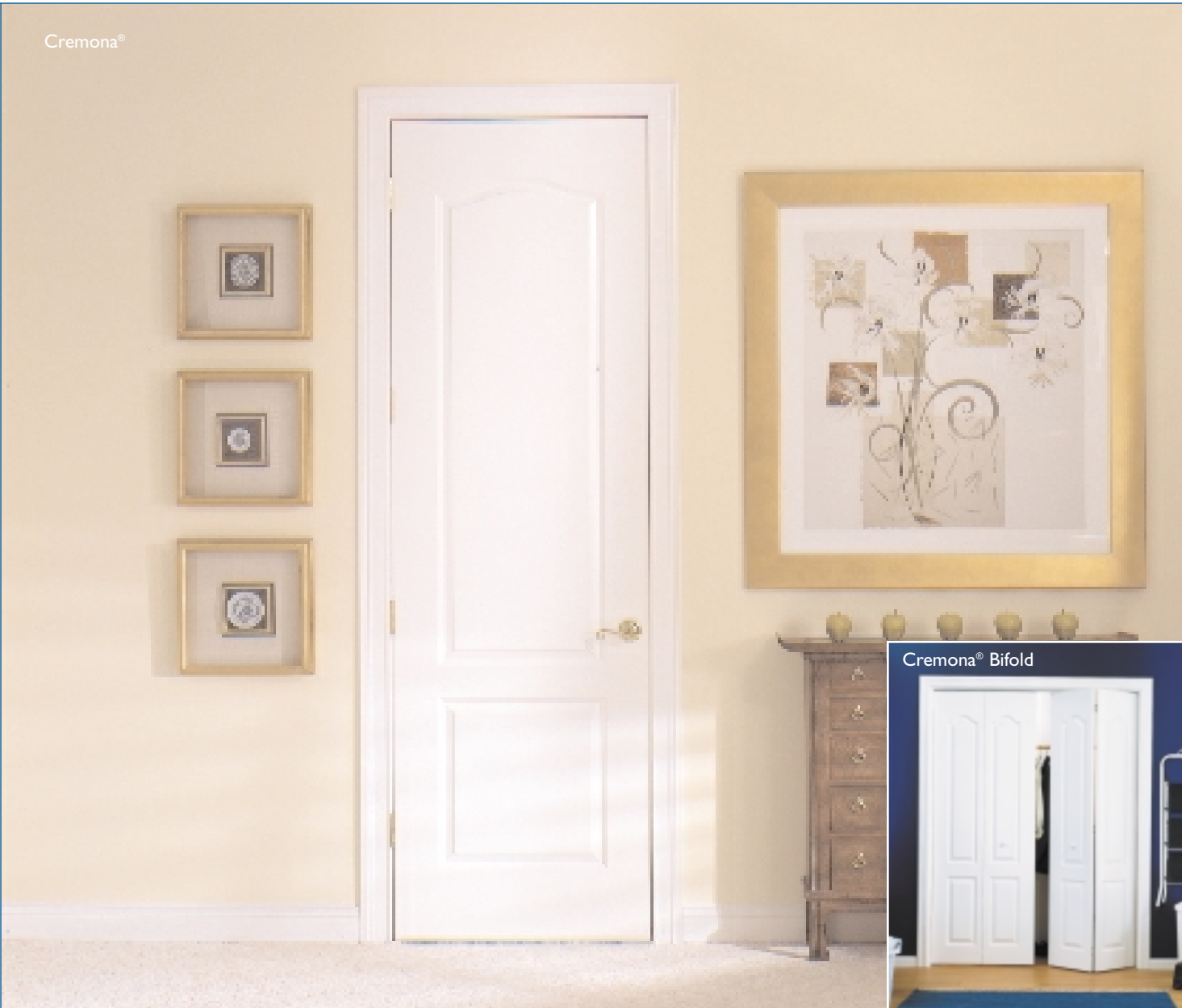


Cremona®



TAKE A CUE FROM FINE EUROPEAN HOMES WITH THE SMOOTH FINISH AND GRACEFUL CURVES OF CREMONA®

- An elegant arch adds interest in any doorway.
- Made from molded high-density fiberboard, Cremona resists shrinking, swelling, cracking and joint separation.
- Engineered wood design outperforms wood doors while offering superior value.
- Make doors a profitable upgrade by offering homebuyers a choice from the CraftMaster line.
- Available in standard 6'8", 7' and 8' passage and bifold sizes.
- Elegant smooth finish.



There is only one CraftMaster and it's the #1 brand of molded interior door designs worldwide.

CHOOSE CRAFTMASTER

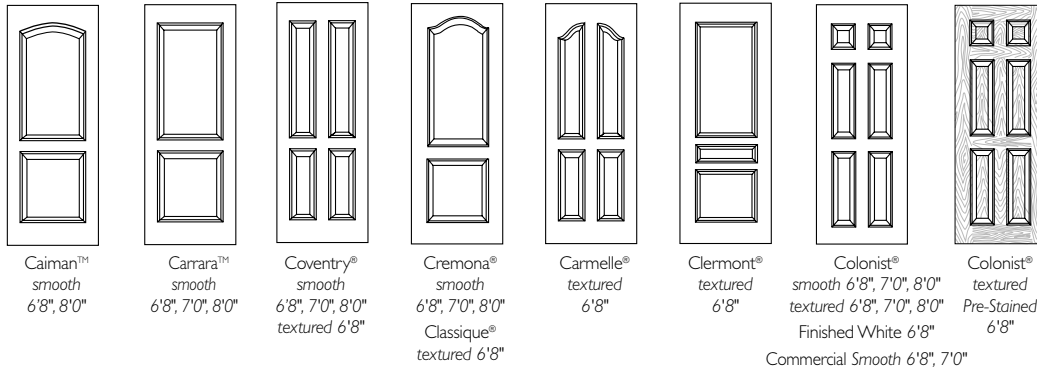
ENHANCE INTERIORS. Use doors as an integral part of interior design. Add style, elegance and decorating consistency to your projects.

HASSLE-FREE PERFORMANCE. No cracking or panel separation due to seasonal humidity changes means no repainting or replacing.

ENVIRONMENTALLY RESPONSIBLE. No old growth timber is harvested for the manufacture of CraftMaster designs. Instead, by-products from sawmill operations are used to convert waste into a design of true beauty.

VALUE. Compelling design and customization opportunity at a significant value versus solid wood or flush doors.

THE CRAFTMASTER LINE OF DOOR DESIGNS



P A S S A G E

	1'0"	1'2"	1'3"	1'4"	1'6"	1'8"	2'0"	2'2"	2'4"	2'6"	2'8"	2'10"	3'0"	3'6"	B I F O L D S									
															1'6"	2'0"	2'4"	2'6"	2'8"	3'0"	4'0"	5'0"	6'0"	
CAIMAN™ Smooth 6'8"	✓	✓	✓	✓	✓	✓	✓	✓	✓	✓	✓	✓	✓	✓			✓	✓	✓	✓	✓	✓	✓	✓
CAIMAN™ Smooth 8'						✓	✓	✓	✓	✓	✓	✓	✓	✓										
CARMELLE® Textured				✓	✓		✓	✓	✓	✓	✓	✓	✓	✓			✓	✓	✓	✓	✓	✓	✓	✓
CARRARA™ Smooth	✓	✓	✓	✓	✓	✓	✓	✓	✓	✓	✓	✓	✓	✓			✓	✓	✓	✓	✓	✓	✓	✓
CARRARA™ Smooth 7'					✓	✓	✓	✓	✓	✓	✓	✓	✓	✓			✓	✓	✓	✓	✓	✓	✓	✓
CARRARA™ Smooth 8'	✓	✓	✓	✓	✓	✓	✓	✓	✓	✓	✓	✓	✓	✓			✓	✓	✓	✓	✓	✓	✓	✓
CLERMONT® Textured	✓	✓	✓	✓	✓	✓	✓	✓	✓	✓	✓	✓	✓	✓			✓	✓	✓	✓	✓	✓	✓	✓
COLONIST® Textured	✓	✓	✓	✓	✓	✓	✓	✓	✓	✓	✓	✓	✓	✓	✓	✓	✓	✓	✓	✓	✓	✓	✓	✓
COLONIST® Smooth	✓	✓	✓	✓	✓	✓	✓	✓	✓	✓	✓	✓	✓	✓			✓	✓	✓	✓	✓	✓	✓	✓
COLONIST® Textured 7'							✓	✓	✓	✓	✓	✓	✓	✓			✓	✓	✓	✓	✓	✓	✓	✓
COLONIST® Smooth 7'					✓		✓	✓	✓	✓	✓	✓	✓	✓			✓	✓	✓	✓	✓	✓	✓	✓
COLONIST® Textured 8'							✓		✓	✓	✓		✓				✓	✓	✓	✓	✓	✓	✓	✓
COLONIST® Smooth 8'	✓	✓	✓	✓	✓	✓	✓	✓	✓	✓	✓	✓	✓	✓			✓	✓	✓	✓	✓	✓	✓	✓
CLASSIQUE® Textured	✓	✓	✓	✓	✓	✓	✓	✓	✓	✓	✓	✓	✓	✓			✓	✓	✓	✓	✓	✓	✓	✓
CREMONA® Smooth					✓	✓	✓	✓	✓	✓	✓	✓	✓	✓			✓	✓	✓	✓	✓	✓	✓	✓
CREMONA® Smooth 7'					✓	✓	✓	✓	✓	✓	✓	✓	✓	✓			✓	✓	✓	✓	✓	✓	✓	✓
CREMONA® Smooth 8'	✓	✓	✓	✓	✓	✓	✓	✓	✓	✓	✓	✓	✓	✓			*	*	*	*	*	*	*	*
COVENTRY® Textured	✓	✓	✓	✓	✓	✓	✓	✓	✓	✓	✓	✓	✓	✓			✓	✓	✓	✓	✓	✓	✓	✓
COVENTRY® Smooth	✓	✓	✓	✓	✓	✓	✓	✓	✓	✓	✓	✓	✓	✓			✓	✓	✓	✓	✓	✓	✓	✓
COVENTRY® Smooth 7'					✓	✓	✓	✓	✓	✓	✓	✓	✓	✓			✓	✓	✓	✓	✓	✓	✓	✓
COVENTRY® Smooth 8'	✓	✓	✓	✓	✓	✓	✓	✓	✓	✓	✓	✓	✓	✓			✓	✓	✓	✓	✓	✓	✓	✓
CRAFTMASTER NATURAL® Textured	✓	✓	✓	✓	✓	✓	✓	✓	✓	✓	✓	✓	✓	✓			✓	✓	✓	✓	✓	✓	✓	✓
CRAFTMASTER MESA™ Textured	✓	✓	✓	✓	✓	✓	✓	✓	✓	✓	✓	✓	✓	✓			✓	✓	✓	✓	✓	✓	✓	✓
CRAFTMASTER CANYON™ Textured	✓	✓	✓	✓	✓	✓	✓	✓	✓	✓	✓	✓	✓	✓			✓	✓	✓	✓	✓	✓	✓	✓
CRAFTMASTER HARVEST® Textured	✓	✓	✓	✓	✓	✓	✓	✓	✓	✓	✓	✓	✓	✓			✓	✓	✓	✓	✓	✓	✓	✓
COLONIST® Finished White Textured	✓	✓	✓	✓	✓	✓	✓	✓	✓	✓	✓	✓	✓	✓			✓	✓	✓	✓	✓	✓	✓	✓
COLONIST® COMMERCIAL Smooth										✓	✓		✓	✓										
COLONIST® COMMERCIAL Smooth 7										✓	✓		✓	✓										

* Check with your door manufacturer for bifold availability. We recommend passage doors for these applications.

CONTACT US

1-800-405-2233
www.craftmasterdoordesigns.com
info@craftmasterdoordesigns.com

INFORMATION

- Marketing programs
- Displays
- Literature
- Point-of-sale materials
- Product support
- Technical information
- Industry research
- Trade association information